



## Plan your dream wedding at Leigh Court

Leigh Court is a Grade II\* listed mansion house near Bristol which has been the backdrop to many beautiful weddings.

This impressive regency era mansion combines an elegant Palladian exterior with opulent Greek revival interior architecture and lavish 19th-century décor. For many years, Leigh Court was a family home, followed by a brief period when it was converted into a hospital, and now it has become one of the most prestigious event venues in Bristol.

From an intimate ceremony in the Great Hall to a huge wedding celebration in a marquee, our historic venue and beautiful extensive lawns give you the space to design the wedding of your dreams and the freedom to celebrate however you choose.



If you have any questions about planning your special day, please do not hesitate to get in touch with the Leigh Court team who will be happy to chat through your options and ensure your day is exactly how you want it to be.

[www.leighcourt.co.uk](http://www.leighcourt.co.uk)  
[enquiry@leighcourt.co.uk](mailto:enquiry@leighcourt.co.uk)  
01275 373 393



## Rooms and suites

### The Great Hall

The Great Hall, with an extraordinary floating double staircase and high ceilings, makes for a grand entrance. Our most popular location for ceremonies, The Great Hall is also a lovely place to display your wedding cake or have a harpist, string quartet or live band play during the ceremony and reception.

### Library

The spacious Library is a fabulous location for your wedding breakfast, with room for all of your nearest and dearest. Want to dance the night away? Dining tables can quickly disappear and be replaced with a shimmering dancefloor. During the warmer months, the doors of the Library open directly onto the rolling, manicured lawn - the ideal viewing spot for a fireworks display.

### Tapestry Room

The Tapestry Room is elaborately decorated, with stunning gold finishes and a decorative ceiling. Start your special day here, with live music, canapes and a cake display, or host your wedding breakfast in a room fit for royalty.

### Morning Room

The Morning Room adjoins the Library and sits to the right of the outer hall when you enter the house, making it a lovely option for a 'snug room' serving tea and coffee for guests. The blush pink walls with white details make this beautiful room an excellent choice for afternoon tea or vintage inspired celebrations.

### Salon

The Salon sits at the rear of the house and is accessed through The Great Hall and the Tapestry Room. The sunshine yellow Salon is a lovely room to serve canapes and provide occasional tables for your guests and welcome drinks.

### Lounge

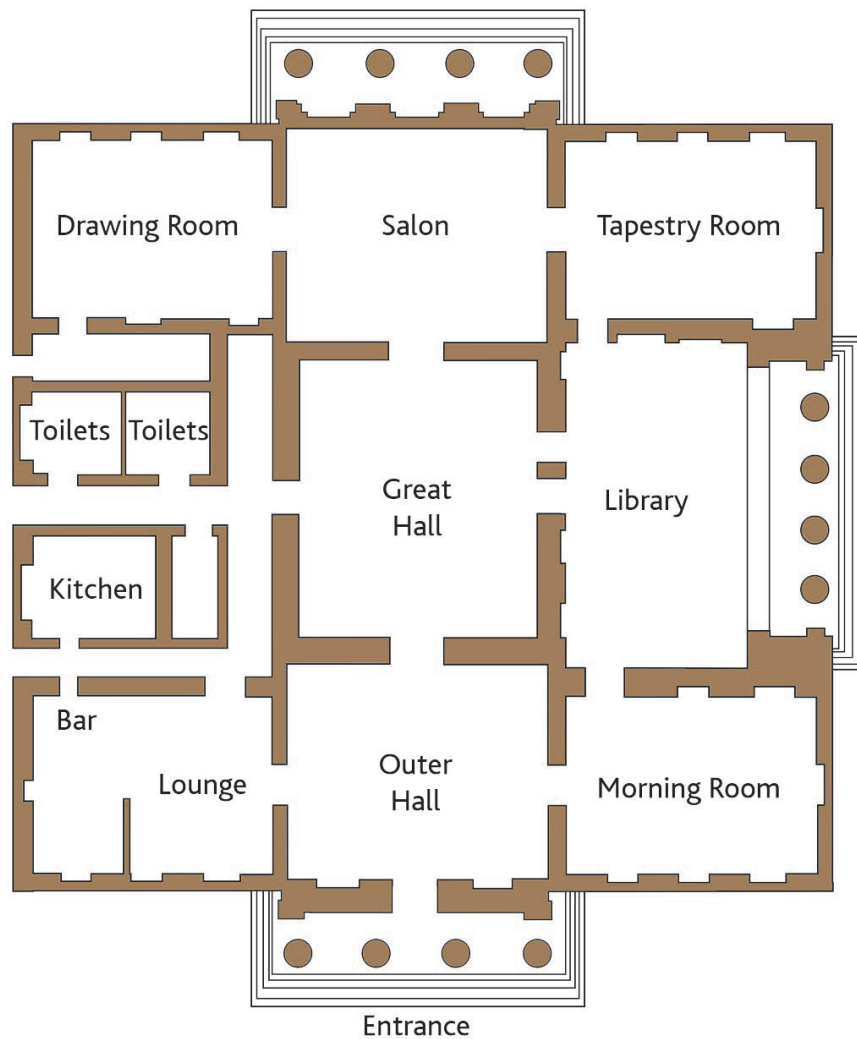
The Lounge area features a fireplace, leather armchairs and a fully stocked bar, a cosy room for guests to catchup and relax.



[www.leighcourt.co.uk](http://www.leighcourt.co.uk)  
[enquiry@leighcourt.co.uk](mailto:enquiry@leighcourt.co.uk)  
01275 373 393



## Leigh Court Floor Plan



*"We just want to say how grateful we are to you for all your amazing work on our wedding. You've been professional and patient from the start, and left us in no doubt that our wedding was in good hands."*

Mr and Mrs Callaghan

[www.leighcourt.co.uk](http://www.leighcourt.co.uk)

[enquiry@leighcourt.co.uk](mailto:enquiry@leighcourt.co.uk)

01275 373 393





## Wedding Packages

### Palladian Package

- Ceremony (excluding registrar)
- Exclusive use of the venue rooms and grounds (evenings and weekends only)
- A three course wedding breakfast, followed by tea and coffee
- Daytime reception
- Evening celebration
- Wedding coordinator
- Minimum 60 guests
- £100 - £135 per person

### Twilight Package

- Ceremony (excluding registrar)
- Exclusive use of the venue rooms and grounds (evenings and weekends only)
- A three course wedding breakfast, followed by tea and coffee
- Evening celebration
- Wedding coordinator
- Minimum 60 guests
- £60 - £95 per person

Bespoke packages are also available

### Extras

- A marquee or tipi on the lawns - price on request.
- Additional evening guests - from just £12 pp
- Chiavari chairs - from £3.50 pp
- Delicious canapes - from £6.00 pp
- Parquet dance floor - £300
- Sweetie bar - £200
- Ice cream tricycle - £300
- Keep the tea and coffee flowing for £2.80 pp



*"A lovely venue in a fantastic setting. We would highly recommend Leigh Court to all our friends and family."*

Mr and Mrs Wright

[www.leighcourt.co.uk](http://www.leighcourt.co.uk)  
[enquiry@leighcourt.co.uk](mailto:enquiry@leighcourt.co.uk)  
01275 373 393



## Catering

### Award-winning catering from Berry Blue

Berry Blue are passionate about creating the perfect food to complement your day. From the moment you meet with the Berry Blue coordinator, to the first taste of your meal on your wedding day, your day is their highest priority and the food is something you will always remember. Having been both winners and highly commended in the Wedding Industry Awards (Best Caterers, South West) between 2014 and 2016, Berry Blue have a reputation for not only fantastic food, but also first class service.

The Berry Blue ethos has always been to use seasonal, locally sourced, fresh ingredients. Berry Blue have their own farm in Gloucestershire, where they grow a range of fruit, vegetables and herbs that are used in their food. They also work with fantastic local suppliers, from green-grocers to butchers and cheese makers. The Berry Blue chefs make all of their food from scratch and it is always cooked fresh on the day in the Leigh Court kitchens

Berry Blue can create menus to suit all budgets, whether you want a three course meal, buffet, barbecue or hog roast, they have a large range of menus to suit all tastes. If you are looking for something altogether different, the chefs can also create a bespoke menu just for you. Berry Blue will ensure that you have a truly delicious day!



*"The team along with Berry Blue caterers made it an absolute dream come true... making sure we were relaxed and enjoying ourselves for every moment."*  
Mr and Mrs Edwards

[www.leighcourt.co.uk](http://www.leighcourt.co.uk)  
[enquiry@leighcourt.co.uk](mailto:enquiry@leighcourt.co.uk)  
01275 373 393